

HIKING ADVENTURE

\$65 per person (includes tax and gratuity)

8:30 AM - 8:45 AM Check-In

Guests will meet at the front of the Adventure Center. Each guest will sign waivers and get a brief description of the trail in Ohiopyle that we will explore.

8:45 AM - 9:00 AM Shippin' Out

Time to get a move on and start the journey towards Ohiopyle. Guests will be transported by Nemaocolin vehicles and dropped off at the trail head to start their adventure!

9:00 AM - 11:30 AM Let The Exploration Begin

It's time to stretch out and get going. In the next couple hours some of the scenery we will see is the great Youghiogheny River and the falls, different rock faces, beautiful fern forests or the remnants of the Ferncliff Hotel to name a few.

11:30 AM - 12:00 PM Come And Get It

Guests will have the pleasure of eating a hearty and delicious lunch, provided by Nemaocolin, in the breathtaking atmosphere of the Youghiogheny River and surrounding Ohiopyle hard woods. Of course, just like any good explorer, we practice leaving only foot prints and pack everything that we take in, out.

12:00 PM - 12:30 PM Home Bound

After the wonderful day of being in the outdoors, guests will travel back to Nemaocolin Woodlands in the luxury of our vehicles. Our trip is concluded back at the Adventure Center where guests will receive a patch stating that they have completed the Hiking Adventure.

Dates:

Saturday, May 29, 2010 Saturday, June 26, 2010
Saturday, July 24, 2010 Saturday, August 21, 2010

Requirements: Must be able to hike five miles in rocky terrain. Children under 12 years must be accompanied by an adult.

Trail difficulty: Easy to Moderate

What to wear: Shorts, t-shirt and a good pair of hiking shoes/boots are a must.

Extra gear: If you would like to bring a camel pack or personal Nalgene bottle that would be fine. For the avid hiker, any personal gear you feel is fit for a leisurely trip.



WHITEWATER RAFTING ADVENTURE

\$200 per person (includes tax and gratuity)

8:30 AM - 8:45 AM Last Chance For Land Lovers

Guests will meet at the front of the Adventure Center. Each guest will sign waivers and get a brief description of the day's agenda and where they will be heading.

8:45 AM - 9:00 AM No Turning Back Now

Time to get a move on and start the journey towards Ohiopyle. Guests will be transported to downtown Ohiopyle by Nemaocolin vehicles and dropped off at Laurel Highlands Outfitters. Once there, guests will get the chance to meet their guide for the day and go over rules and safety tips from the outfitters.

9:00 AM - 12:30 PM Time To Get In The Funyak

Our trip will take place on the "lower" section of the Youghiogheny River. This trip will take us through the heart of the Laurel Mountains on a fast moving adrenaline rush of a ride. With Class 3 & 4 rapids, this is a ride that is great for the family and one that you will never forget.

12:30 PM - 1:00 PM Back To Dry Ground

(Time varies due to the elements.) Travel back to Nemaocolin Woodlands, but the fun doesn't have to end. If you're still up for challenges, try out our other activities at the Adventure Center.

Dates:

Saturday, June 19, 2010 Saturday, July 17, 2010
Saturday, August 14, 2010

Requirements: Adventure is for ages 12 and up. Children under 18 must be accompanied by an adult.

Ride difficulty: Intermediate (Class 3 & 4 rapids)

What to wear: Shorts, t-shirt and a good pair of closed toe sandals or water shoes are recommended. You will definitely get wet!

Extra gear: No extra gear is needed; everything is provided.

HORSEBACK RIDING ADVENTURE

\$300 per person (includes tax and gratuity)

8:30 AM - 9:00AM Saddle Up

Guests will meet at the Wildlife Academy where they will check in, sign waivers and get helmets. We will load up the horses and travel to the Sugarloaf trails.

9:00 AM - 12:00 PM Giddy Up

We will unload the horses and hit the trails. This will be a leisurely walking ride on part of the 9 miles of scenic trails. While on the ride we may encounter some of the local wildlife that inhabit the state park. Around 11:00 AM we will dismount from the horses and enjoy a hearty and delicious lunch, provided by Nemaocolin, and then continue on our way.

12:00 PM - 12:30 PM Back to the Barn

After a wonderful ride outdoors, we will load our horses back on the trailer and return to the Wildlife Academy at Nemaocolin.

Dates:

Saturday, June 5, 12, 19 & 26
Saturday, July 3, 10, 17, 24 & 31
Saturday, August 7, 14, 21 & 28
Saturday, September 4

Additional days and times are available; please dial extension 6070.

Requirements: Must have some riding experience. Riders must be 16 years and older. Children under 18 must be accompanied by an adult. Helmets are required.

What to wear: Long pants, boots or tennis shoes (no sandals), t-shirt.

Extra gear: If you would like to bring an extra water bottle, helmet or any other personal gear you feel is fit for a leisurely trip. Please DO NOT bring any of your own horse tack.



Ohiopyle Adventures



1001 LAFAYETTE DRIVE
FARMINGTON, PA 15437
NEMACOLIN.COM

 NEMACOLIN
WOODLANDS RESORT

Want to try something new and exciting while staying at Nemaacolin Woodlands? Then join in the fun on Saturdays as we travel to the Ohiopyle State Park, where you will get the chance to check out more than 19,000 acres of rugged natural beauty.

Programs are available 8:30 AM - 12:30 PM on Saturdays from May 29, 2010 through September 4, 2010. For more information on any of the Ohiopyle Adventures or to make reservations, please dial 800.422.2736 or visit our website at nemaacolin.com.



BIKING ADVENTURE

\$100 per person (includes tax and gratuity)

8:30 AM - 8:45 AM Gear Up

Guests will meet at the front of the Adventure Center. Here they will sign waivers and get a description of the 9 miles of Rail To Trail that will take them through the scenic Youghiogheny Gorge.

8:45 AM - 9:00 AM Let's Roll

Time to get a move on and start the journey towards Ohiopyle. Guests will be transported by Nemaacolin vehicles and dropped off at the Ramcat Boat Launch to start their adventure!

9:00 AM - 12:00 PM Keep On Truck'n

On the trip guests get the beautiful view of the river and the Laurel Mountains so bring your cameras – there will be plenty of vistas on our travel. Half way through the trip we will replenish our energy with a hearty and delicious lunch, provided by Nemaacolin, and continue on our journey.

12:00 PM - 12:30 PM The Home Stretch

After the wonderful day of being in the outdoors, guests will travel back to Nemaacolin Woodlands in the luxury of our vehicles. Our trip is concluded back at the Adventure Center where guests will receive a patch stating that they have completed the Biking Adventure.

Dates available:

Saturday, June 12, 2010 Saturday, July 10, 2010
Saturday, August 7, 2010 Saturday, September 4, 2010

Requirements: Must be able to bike 9 miles. Children under 12 years must be accompanied by an adult. Helmets are required.

Trail difficulty: Easy to Moderate

What to wear: Shorts, t-shirt, bike helmet and a good pair of tennis shoes are a must.

Extra gear: If you would like to bring a camel pack or personal Nalgene bottle that would be fine. For the avid biker, any personal gear you feel is fit for a leisurely trip.

ROCK CLIMBING ADVENTURE

\$129 per person (includes tax and gratuity)

8:30 AM - 8:45 AM On Belay

Guests will meet at the front of the Adventure Center. Each guest will sign waivers and get a brief description on climbing etiquette, proper verbiage and equipment.

8:45 AM - 9:15 AM Let's Go Gumby

Time to get a move on and start the journey towards Ohiopyle. Guests will be transported by Nemaacolin vehicles and dropped off at Meadow Run trail head. Guests will get the full experience of back country climbing with a leisurely 15 minute hike to and from the rock face. All of the climbing equipment will be distributed between the guests and carried in and out.

9:15 AM - 10:45 AM Air Traffic Control

Guests will get the full experience by helping the instructors set up an anchor and prepare the rope for top roping. At this time everyone will be educated on tying figure eight knots, how to belay properly, and how to safely use the climbing equipment (carabineers, harnesses, ATC/GriGri's, and Daisy Chains).

10:45 AM - 11:30 AM Bombers And Chicken Heads

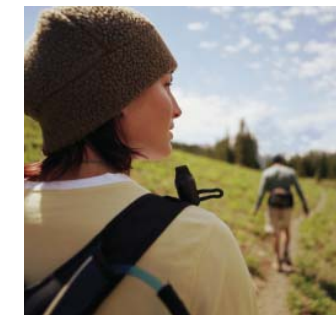
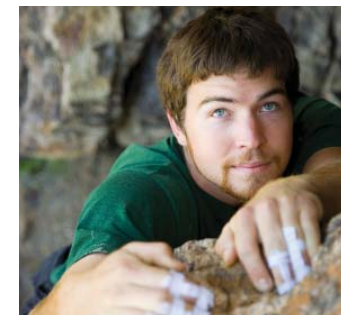
Finally guests will get to climb until they get the Elvis Legs. By splitting up into teams of three each guest will get the chance to belay, spot, and climb as much as they can in the time given.

11:30 AM - 12:00 PM Dirt Me

Guests will have the pleasure of eating a hearty and delicious lunch, provided by Nemaacolin, beside the breathtaking scenery of the Meadow Run cascades. Of course, just like any good explorer, we practice leaving only foot prints and pack everything that we take in, out.

12:15 PM - 12:30 PM Back To The Yurt

After the wonderful day being in the outdoors guests will travel back to Nemaacolin Woodlands in the luxury of our vehicles. Our trip is concluded back at the Adventure Center where guests will receive a patch stating that they have completed the Rock Climbing Adventure.



Dates available:

Saturday, June 5, 2010 Saturday, July 3, 2010
Saturday, July 31, 2010 Saturday, August 28, 2010

Requirements: Must be able to lift own body weight. Children under 12 years must be accompanied by an adult.

Rock face difficulty: Easy to intermediate (Class 5.0 - 5.7 for those who climb).

What to wear: Shorts, t-shirt and a good pair of tennis shoes are a must.

Extra gear: If you would like to bring a personal Nalgene bottle, harness, helmets or climbing shoes that would be fine. Please DO NOT bring your own rope, carabineers, belay devices or webbing.